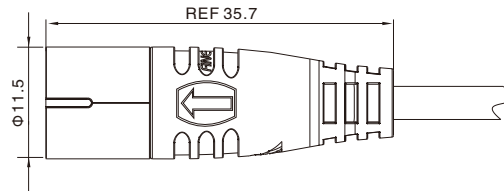


## M10 Male Molded Cable, Straight , Snap-in Type

- Connector series: M10
- Gender: Male
- Locking type: Snap-in
- Mounting type: Straight
- Part No.: MA10MAI\*\*STXXXX14

\*\* refers to pins number  
X refers to cable specification



### General information

RoHS

Ambient temperature:	-40°C ~ +80°C(fixed installation) -20°C ~ +80°C(flexible installation)
Connector insert:	PA + GF
Connector contacts:	Brass with gold plated
Connector overmold:	TPU

Insulation resistance:	≥20MΩ
Contact resistance:	≤5mΩ
Shielding:	Unavailable
IP rating:	IP65 in locked condition
Mating endurance:	>500 cycles

### Electrical data & Mechanical data

Contacts		Rated current	Voltage		Wire gauge / size		Wire insulation	Cable jacket	Part No.
			A/C	D/C	AWG	mm <sup>2</sup>			
05 pins		2A	60V	72V	26AWG	0.14	PVC	PVC	MA10MAI05STXXCB14
								PUR	MA10MAI05STXXRB14
09 pins		1A	30V	30V	26AWG	0.14	PVC	PVC	MA10MAI09STXXCB14
								PUR	MA10MAI09STXXRB14

Note: X refers to cable length

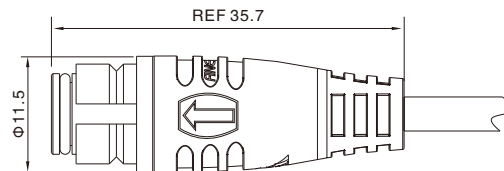
### Remarks

- Please refer to Page 578 for the Conversion between American Wire Gauge AWG and Wire Cross-section mm<sup>2</sup>.
- Please refer to Page 77 for products' part number encoding rule.

## M10 Female Molded Cable, Straight, Snap-in Type

- Connector series: M10
- Gender: Female
- Locking type: Snap-in
- Mounting type: Straight
- Part No.: MA10FAI\*\*STXXX14

\*\* refers to pins number  
X refers to cable specification



### General information

RoHS

Ambient temperature:	-40°C ~ +80°C(fixed installation) -20°C ~ +80°C(flexible installation)
Connector insert:	PA + GF
Connector contacts:	Brass with gold plated
Connector overmold:	TPU
Seal / O-ring:	FKM

Insulation resistance:	≥20MΩ
Contact resistance:	≤5mΩ
Shielding:	Unavailable
IP rating:	IP65 in locked condition
Mating endurance:	>500 cycles

### Electrical data & Mechanical data

Contacts		Rated current	Voltage		Wire gauge / size		Wire insulation	Cable jacket	Part No.
			A/C	D/C	AWG	mm <sup>2</sup>			
05 pins		2A	60V	72V	26AWG	0.14	PVC	PVC	MA10FAI05STXXCB14
								PUR	MA10FAI05STXXRB14
09 pins		1A	30V	30V	26AWG	0.14	PVC	PVC	MA10FAI09STXXCB14
								PUR	MA10FAI09STXXRB14

Note: X refers to cable length

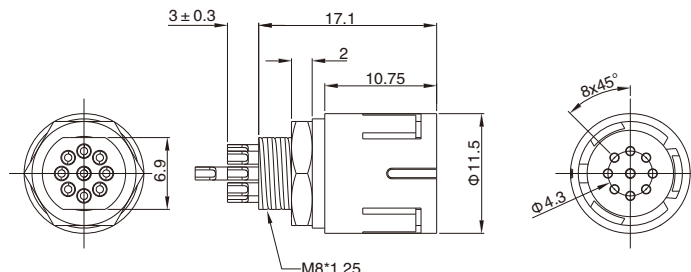
### Remarks

- Please refer to Page 578 for the Conversion between American Wire Gauge AWG and Wire Cross-section mm<sup>2</sup>.
- Please refer to Page 77 for products' part number encoding rule.

## M10 Male Panel Mount, Solder Type, Rear Fastened

- Connector series: M10
- Gender: Male
- Locking type: Snap-in
- Mounting type: Rear fastened
- Part No.: MB10MSARI\*\*ST

\*\* refers to pins number



RoHS

### General information

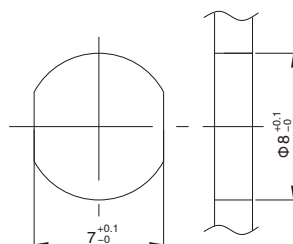
Ambient temperature:	-20°C ~ +80°C
Connector insert:	PA + GF
Connector contacts:	Brass with gold plated
Coupling nut:	Brass with nickel plated

Insulation resistance:	≥ 20MΩ
Contact resistance:	≤ 5mΩ
Shielding:	Unavailable
IP rating:	IP65 in locked condition
Mating endurance:	>500 cycles

### Electrical data & Mechanical data

Contacts	Contacts termination	Rated current	Voltage		Wire gauge / size		Wire insulation	Part No.	
			A/C	D/C	AWG	mm <sup>2</sup>			
05 pins		Solder version	2A	60V	72V	26AWG	0.14	PVC wire or customized	MA10MSARI05ST
09 pins		Solder version	1A	30V	30V	26AWG	0.14	PVC wire or customized	MA10MSARI09ST

### Panel Cut-out Dimensions



Panel cut-out

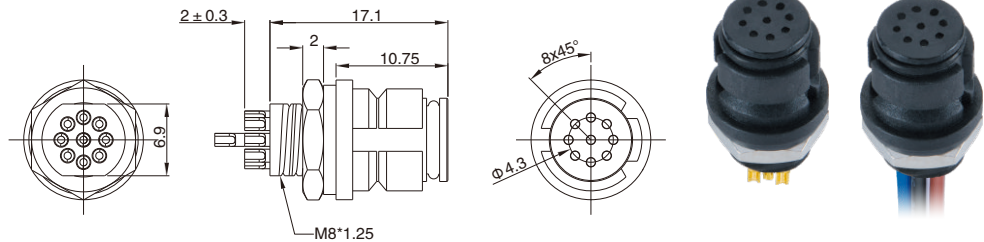
### Remarks

- Please refer to Page 77 for products' part number encoding rule.

## M10 Female Panel Mount, Solder Type, Rear Fastened

- Connector series: M10
- Gender: Female
- Locking type: Snap-in
- Mounting type: Rear fastened
- Part No.: MB10FSARI\*\*ST

\*\* refers to pins number



RoHS

### General information

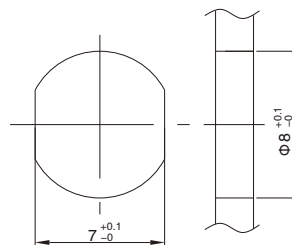
Ambient temperature:	-20°C ~ +80°C
Connector insert:	PA + GF
Connector contacts:	Brass with gold plated
Coupling nut:	Brass with nickel plated
O-ring:	FKM

Insulation resistance:	≥20MΩ
Contact resistance:	≤5mΩ
Shielding:	Unavailable
IP rating:	IP65 in locked condition
Mating endurance:	>500 cycles

### Electrical data & Mechanical data

Contacts	Contacts termination	Rated current	Voltage		Wire gauge / size		Wire insulation	Part No.	
			A/C	D/C	AWG	mm <sup>2</sup>			
05 pins		Solder version	2A	60V	72V	26AWG	0.14	PVC wire or customized	MA10FSARI05ST
09 pins		Solder version	1A	30V	30V	26AWG	0.14	PVC wire or customized	MA10FSARI09ST

### Panel Cut-out Dimensions



Panel cut-out

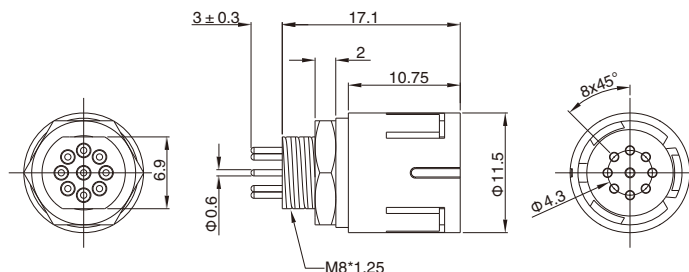
### Remarks

- Please refer to Page 77 for products' part number encoding rule.

## M10 Male Panel Mount, PCB Type, Rear Fastened

- Connector series: M10
- Gender: Male
- Locking type: Snap-in
- Mounting type: Rear fastened
- Part No.: MB10MBARI\*\*ST

\*\* refers to pins number



RoHS

### General information

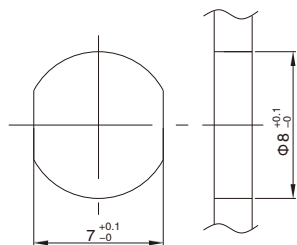
Ambient temperature:	-20°C ~ +80°C
Connector insert:	PA + GF
Connector contacts:	Brass with gold plated
Coupling nut:	Brass with nickel plated

Insulation resistance:	$\geq 20M\Omega$
Contact resistance:	$\leq 5m\Omega$
Shielding:	Unavailable
IP rating:	IP65 in locked condition
Mating endurance:	>500 cycles

### Electrical data & Mechanical data

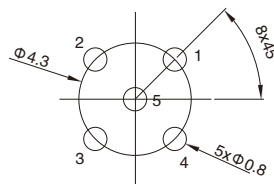
Contacts		Contacts termination	Rated current	Voltage		Part No.
				A/C	D/C	
05 pins		PCB version	2A	60V	72V	MB10MBARI05ST
09 pins		PCB version	1A	30V	30V	MB10MBARI09ST

### Panel Cut-out Dimensions

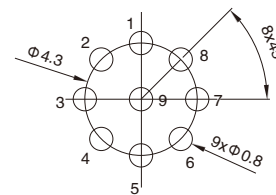


Panel cut-out

### PCB Layout



5Pins male



9Pins male

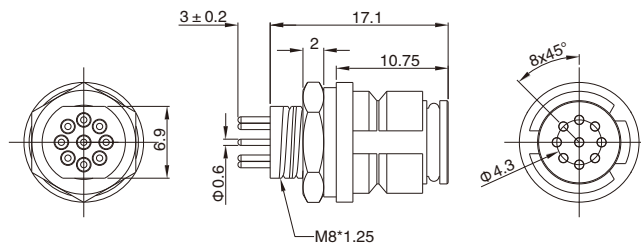
### Remarks

- Please refer to Page 77 for products' part number encoding rule.

## M10 Female Panel Mount, PCB Type, Rear Fastened

- Connector series: M10
- Gender: Female
- Locking type: Snap-in
- Mounting type: Rear fastened
- Part No.: MB10FBARI\*\*ST

\*\* refers to pins number



RoHS

### General information

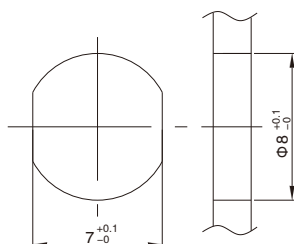
Ambient temperature:	-20°C ~ +80°C
Connector insert:	PA + GF
Connector contacts:	Brass with gold plated
Coupling nut:	Brass with nickel plated
O-ring:	FKM

Insulation resistance:	$\geq 20M\Omega$
Contact resistance:	$\leq 5m\Omega$
Shielding:	Unavailable
IP rating:	IP65 in locked condition
Mating endurance:	>500 cycles

### Electrical data & Mechanical data

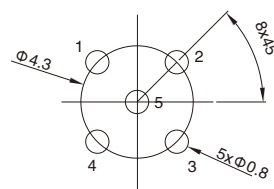
Contacts		Contacts termination	Rated current	Voltage		Part No.
				A/C	D/C	
05 pins		PCB version	2A	60V	72V	MB10FBARI05ST
09 pins		PCB version	1A	30V	30V	MB10FBARI09ST

### Panel Cut-out Dimensions

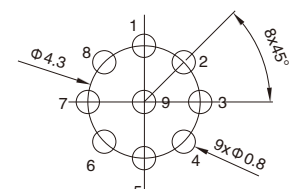


Panel cut-out

### PCB Layout



5Pins Female



9Pins Female

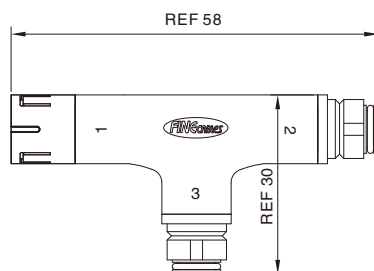
### Remarks

- Please refer to Page 77 for products' part number encoding rule.

## M10 T-Splitter, Female-Male-Female

- Connector series: M10
- Gender: Female&Male
- Locking type: Snap-in
- Mounting type: T-type
- Part No.: MT10-AI\*\*

\*\* refers to pins number



RoHS

### General information

Ambient temperature:	-20°C ~ +80°C
Connector insert:	PA + GF
Connector contacts:	Brass with gold plated
Coupling nut:	TPU

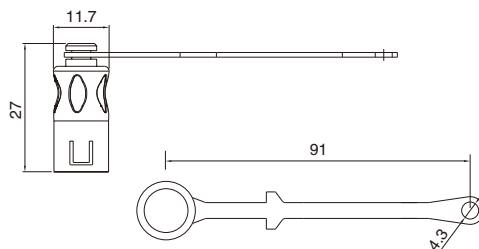
Insulation resistance:	≥20MΩ
Contact resistance:	≤5mΩ
Shielding:	Unavailable
IP rating:	IP65 in locked condition
Mating endurance:	>500 cycles

### Electrical data & Mechanical data

Contacts		Contacts termination	Rated current	Voltage		Part No.
				A/C	D/C	
05 pins	(Male)	Solder version	2A	60V	72V	MT10-AI05
	(Female)					

## M10 Protection Cap for Female Connector

- Connector series: M10
- Gender: for Female
- Locking type: Snap-in
- Part No.: PCNM10-1



### General information

Color:	Black
nut/screw:	PA+GF

Loop:	TPU
IP rating:	IP65 in locked condition